

# COMMERCIAL LIGHT UTILITY VEHICLES



Shown with optional Yamaha Genuine Accessories.



# 60 + YEARS

## YAMAHA MOTOR CORPORATION

With Yamaha, every challenge is an opportunity for adventure with our rich pedigree of motor vehicles, including snowmobiles, scooters, ATVs, personal watercraft vehicles and so much more.

BOATS



MARINE ENGINES



GENERATORS



RECREATIONAL VEHICLES



MOTORCYCLES



WAVERUNNERS®



ALL-TERRAIN VEHICLES



SNOWMOBILES



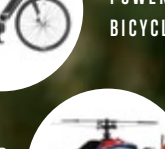
INTELLIGENT MACHINERY



POWER ASSIST BICYCLES



REMOTELY PILOTED HELICOPTERS



UMAX® CARS	4 - 15	PARTS AND ACCESSORIES	24 - 47
DRIVE² CARS	16 - 23	SPECIFICATIONS	48 - 55

Shown with optional Yamaha Genuine Accessories.





# HARDWORKING FEATURES YIELD EFFICIENT RESULTS, DAY AFTER DAY



### SEE MORE ONLINE!

Scan now to watch all the UMAX features in action.



With five color options, four-wheel brakes, luxurious bucket seats, an under-hood storage compartment, and large 20" tires, all with the quietness of an electric car, you can see the difference when power, performance, versatility, and comfort matter.

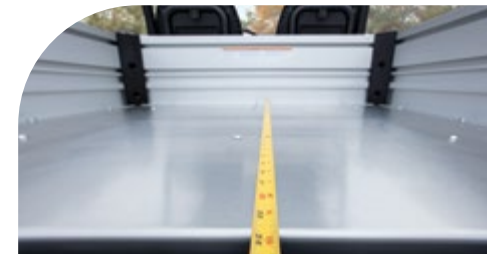
## MAXIMIZE YOUR EFFORTS WITH A UMAX® DUMP BED

Featuring an effortless dump bed lock, you can easily unlock the bed for quick unloading. Your maintenance team will also enjoy more volume than ever before with a capacity of 10.4 cubic feet and a max load of 300 lbs in our UMAX One and 12.9 cubic feet and a max load of 800 lbs in our UMAX Two.



### DUMP BED

Your team will have more volume than ever before to get the job done.



### TILT BED FEATURE

Easily unlock the bed for quick unloading.



### RECEIVER HITCH

Comes standard on all UMAX and UMAX Rally vehicles. Not available on the Rally<sup>2+2</sup>.



### CONVENIENT SIDE-FILL GAS TANK

Makes for a quick, efficient fill-up.



### UNDER-HOOD STORAGE COMPARTMENT

Sizable storage area designed for convenience.



### AUTOMOTIVE-STYLE DASH

Completely redesigned for today's professional.



### LUXURIOUS BUCKET SEATS

Derived from our award-winning Viking® Side-by-Side, you can enjoy a comfortable ride with support that will last your entire work day.

Metallic	Coral Red
Metallic	Bluestone
Metallic	Evergreen
Metallic	Carbon
	Glacier

### AVAILABLE COLORS



# GET THE JOB DONE WITH PREMIUM POWER AND TORQUE

Our UMAX lineup was expertly designed to get the job done, however big or small. Build your ideal vehicle using our robust range of custom options to ensure you get the most out of your work day.

WITH THE DFK UMAX  
HARD CAB ENCLOSURE  
ADD-ON, RIDERS WILL  
ENJOY THE CONVENIENCE  
AND PROTECTION FROM  
THE ELEMENTS WITH  
EASY-OPEN SIDE DOORS.



**UMAX  
ONE**  
AVAILABLE IN GAS

**UMAX  
TWO**  
AVAILABLE IN GAS  
AND ELECTRIC



# ALL THE POWER OF YAMAHA IN ONE CAR

The new UMAX Rally® features a lifted suspension, 23" tires wrapped around 12" V-window wheels and comes complete with a Yamaha Genuine front brush guard and fender flares. Whether it's for a farm, construction site, warehouse, or campus, the UMAX Rally is another reason why Yamaha is The Easy Choice.™

LARGE 23"  
ALL-TERRAIN TIRES  
THAT ARE READY  
FOR TOUGH JOBS.



EQUIPPED WITH A YAMAHA GENUINE BRUSH GUARD



6 INCH  
INCREASED  
GROUND CLEARANCE







# BUILD YOUR CUSTOM UMAX® WITH VIBRANT COLOR OPTIONS



**BLUESTONE**  
Metallic



**EVERGREEN**  
Metallic



**CORAL RED**  
Metallic



**CARBON**  
Metallic



**GLACIER**



# A COMFORTABLE RIDE, EQUIPPED FOR ANY JOB

Your UMAX Rally<sup>2+2</sup> can handle whatever job you throw at it. From a dirt road at the farm to a paved pathway at the airport, this vehicle ensures success with comfortable seating, plenty of storage, and so much more.



TACKLE ANY JOB WITH

# 23 INCH TIRES

Metallic	Onyx
	Glacier
Matte	Titan
Metallic	Coral Red
	Cyan
Metallic	Bluestone
Metallic	Carbon

AVAILABLE COLORS

Shown with optional Yamaha Genuine Accessories.

Where permitted by closed-community regulations or other local ordinance, the Personal Transportation Vehicle (PTV) shown is suitable for use on private/public roads with a maximum posted speed limit of 25 mph. It does not meet federal motor vehicle safety standards applicable to passenger cars.



# REFRESH YOUR PTV WITH BOLD COLOR OPTIONS



ONYX  
Metallic



GLACIER



TITAN  
Matte



CORAL RED  
Metallic



CYAN



BLUESTONE  
Metallic



CARBON  
Metallic





SEE MORE ONLINE!  
Scan now to watch all the Drive<sup>2</sup> features in action.



# INNOVATIVE FEATURES AT EVERY TURN

At Yamaha, we're innovating with today's driver in mind. With bold colors and modern body styling, our Drive<sup>2</sup> line-up looks better than ever, but the biggest change is the one you don't see — a smoother ride.



Shown with optional Yamaha Genuine Accessories.

Where permitted by closed-community regulations or other local ordinance, the Personal Transportation Vehicle (PTV) shown is suitable for use on private/public roads with a maximum posted speed limit of 25 mph. It does not meet federal motor vehicle safety standards applicable to passenger cars.

## INDEPENDENT REAR SUSPENSION

Standard on all Drive<sup>2</sup> PowerTech AC, Drive<sup>2</sup> PowerTech Li and Drive<sup>2</sup> QuietTech EFI models. Experience stability and comfort.



**STORAGE BIN WITH NO-SLIP MAT**  
34% larger to keep more valuables in place.



**ROOMIER BAGWELL**  
Holds two staff bags comfortably and securely.



**MORE SPACIOUS SWEATER BASKET**  
Designed for easy cleaning and abundant storage.



**FRONT SUSPENSION**  
Fully independent front suspension for maximum performance and comfort.



**TWO USB CONNECTIONS**  
Easily maintain power and stay charged. (Optional on Drive<sup>2</sup> AC and Drive<sup>2</sup> EFI models).



**CLIMAGUARD™ SUN TOP**  
Protect players from the elements with a dual gutter system. 33% larger size than the nearest competitor.



**AUTOMOTIVE-STYLE DASH**  
Fully equipped with larger cup holders, a place for two range finders and mobile devices, plus optional USB connections.

Metallic	Onyx
In-Mold	Glacier
Matte	Titan
Metallic	Peridot
Metallic	Coral Red
Matte	Arctic Drift
Metallic	Carbon

AVAILABLE COLORS



# SETTING THE HIGHEST STANDARD FOR COMFORT

Whether you are giving a facility tour to clients or transporting guests around the hotel grounds, our Drive<sup>2</sup> Concierge 4 will always impress even the most discerning passengers. Make their first impression the best one with a smooth, quiet ride and the widest, most luxuriously comfortable seats in the industry.

EXTRA STORAGE UNDER TWO BENCH SEATS MEANS YOU'LL NEVER HAVE TO MAKE A SECOND TRIP.



## CONCIERGE 6

We've outfitted both our four and six-seat Concierge models with a wealth of features to inspire the most enjoyable experiences for your riders.



Shown with optional Yamaha Genuine Accessories.



GAS & ELECTRIC  
OPTIONS AVAILABLE

Shown with optional Yamaha Genuine Accessories.

Where permitted by closed-community regulations or other local ordinance, the Personal Transportation Vehicle (PTV) shown is suitable for use on private/public roads with a maximum posted speed limit of 25 mph. It does not meet federal motor vehicle safety standards applicable to passenger cars.



# REFRESH YOUR CONCIERGE WITH BOLD COLOR OPTIONS



ONYX  
Metallic



GLACIER  
In-Mold



TITAN  
Matte



PERIDOT  
Metallic



CORAL RED  
Metallic



CARBON  
Metallic



ARCTIC DRIFT  
Matte





# HARDWORKING AND READY TO HAUL ANYTHING

Whether you're replacing water heaters or setting up for the day's big event, this extra-large hauler will handle your load. With durable, low-maintenance engineering and a super-sized aluminum cargo bed, it'll save you more than a few trips, not to mention headaches.



FEATURING 72" X 48"  
SUPERSIZED ALUMINUM  
CARGO BED.







**DON'T EXPECT IT.  
DEMAND IT!®**

All Yamaha Genuine Parts and Accessories have a three-year limited warranty, unless otherwise specified.

**PARTS AND ACCESSORIES**



# FUSIONFIT™

Yamaha's exclusive FusionFit™ Bed Attachment Kit is the base that will keep your rakes, shovels, edgers, trimmers and other long-handled tools always at-the-ready; our accessory designers and engineers worked with our teams to create precise integrations that guarantee the unique fitment your Yamaha deserves.

Using CAD modeling, FusionFit features meticulous mounting points per unit per accessory that ensures the most accurate installation system possible. FusionFit allows for the tightest tolerances that are unmatched and impossible to replicate with aftermarket products.



**UMAX FusionFit™ Bed Attachment Kit**

Our FusionFit™ Bed Attachment Kit will help keep your rakes, shovels, guns, bows and other long-handled tools always at-the-ready. Yamaha's FusionFit accessory system provides a tool-less design that allows you to "click and go" with only a quarter turn. An integrated padlock slot gives you the option to easily secure your cargo and go. Fits 2019-2020 UMAX One/Two, UMAX One/Two Rally, UMAX Range Picker, and UMAX One/Two with Hard Cab models. Sold in pairs.

**J0G-F34A0-V0-00**

**NOTE:** Requires use of the separately sold ATV TEK V-GRIP™ or ATV TEK FLEXGRIP™ or ATV TEK Elite Series Cam Lock Grip. (Both are available in singles and doubles). Visit [ShopYamaha.com](http://ShopYamaha.com) to see all options and pricing.



**ATV TEK V-GRIP™**

The ATV TEK V-GRIP™ offers a true custom fit for whatever tool you find yourself needing to carry. With effortless installation, unmatched versatility, and a rock solid mounting base, the V-GRIP design isolates recoil and vibration, ensuring your tools stay where you put them. Single kit includes (2) grips, (2) mounting bases, (2) rubber snubbers and all necessary hardware. Fits with UMAX FusionFit™ Bed Attachment (Double kits contain (2) Single kits in addition to the sliding "T"-Bracket for ultimate adjustability).

V-GRIP SINGLE  
**ABA-VFG10-00-00**

V-GRIP DOUBLE  
**ABA-VFG20-00-00**

**NOTE:** Requires a UMAX FusionFit Bed Attachment Kit.



**ATV TEK FLEXGRIP™ PRO**

The ATV TEK FLEXGRIP™ PRO provides an additional 16" of side-to-side (8" per side), horizontal adjustment and offers a true, custom fit with increasing rigidity for whatever tool you find yourself needing to carry. Finger-adjustable knobs allow for quick, tool-free adjustments on the fly. Single kit includes (2) grips, (2) mounting bases, (2) rubber snubbers, and all necessary hardware. Fits with UMAX FusionFit Bed Attachment. (Double kits contain (2) Single kits in addition to the sliding "T"-Bracket for ultimate adjustability).

FLEXGRIP PRO SINGLE  
**ABA-FFG10-00-00**

FLEXGRIP PRO DOUBLE  
**ABA-FFG20-00-00**



This document contains many of the valuable trademarks and service marks owned and used by Yamaha throughout the world. The document may also contain references to other company, brand, and product names that may be the trademarks/service marks of their respective owners. Unless noted otherwise, these company, brand, and product names are used herein for identification purposes only, and reference to any names, marks, products, or services of third parties do not constitute or imply endorsement, sponsorship, or recommendation of the third party or the product or services.





Overhead AM/FM Bluetooth® Audio System

Instead of playing music through your cellphone speakers, enjoy your favorite tunes through our Overhead AM/FM Stereo with Bluetooth® that can withstand the harshest conditions, takes up none of your car space, and gives you impeccable sound quality. This system is fully weatherproof and features 3.5mm AUX-in and USB charging, new SSV Works® waterproof, marine-grade 6.5" speakers, six preset equalizer options, Bluetooth®, AM/FM tuner with LCD backlit display and internally integrated antenna, integrated hyper-white, six LED dome light. Includes wiring, mounting hardware, and step-by-step instructions (simple 2-wire installation). Fits The Drive and Drive² commercial cars and all 2019-2024 UMAX utility vehicles with factory Sun Top.

**J0G-H81C0-V0-00**

**NOTE:** Easily add aftermarket amplifiers or powered subwoofers through the 4v RCA low-level pre-output.



10" 500-watt Subwoofer by SSV Works

Need more bass in your space? SSV Works Premium Marine Subwoofer started the revolution. They produce great volume and clarity designed for the outdoor environment for the powersport enthusiast.

**J0D-H81S0-V0-00**



6.5 Speaker Pod Kit by SSV Works

SSV Works' new Premium 6.5" Marine-Grade Weatherproof Speakers will transform the sound of your golf car stereo!

**J0D-H81D0-V0-00**



Pair of Speaker Pod Clamps by SSV Works

Optional mounts for the Speaker Pod Kit #J0D-H81D0-V0-00.

**ROUND CLAMPS**  
**J0G-H81D0-M0-00**  
Fits most utility vehicles  
with 1.5" round supports

**SQUARE CLAMPS**  
**J0D-H81D0-M0-00**  
Fits most utility vehicles  
with 1.0" square supports



Speaker Expansion Harness by SSV Works

Universal fitment for 4-passenger tops.

**J0D-H81D0-L0-00**



EcoXGear® SoundExtreme Sound Bar

With the EcoXGear SoundExtreme Sound Bar, you will enjoy premium sound quality with marine-grade, waterproof speakers. Designed for Bluetooth pairing with smartphones, you can listen to music, podcasts or make phone calls in style.

**ACC-ECOXT-R0-26**      **ACC-ECOXS-ET-V4**  
**ACC-ECOSW-ES-08**      **ACC-ECOXT-R0-18**  
**ACC-ECOXS-EB-26**      **ACC-ECOXT-R0-32**

**NOTE:** Requires a custom mounting solution and wiring to 12V source.



MA100 Speaker/Amp Package

Kick your sound game up a notch by adding this MA100 Speaker/Amp Package to your Drive². Amplify your favorite songs from basic to banging with this salt and corrosion-resistant system that will keep the entertainment going as you cruise. Universal fit for most golf cars.

**GCA-MA100-10-00**



## COVERS



### UMAX Storage Cover

Guard your UMAX from the elements during storage. We teamed up with Classic Accessories® to create the best storage cover tailored to perfectly fit your new UMAX. Fits 2019-2020 UMAX One, UMAX Range Picker, UMAX Two, UMAX One/Two Rally and UMAX One/Two with Hard Cab models.

**JOG-F81A0-V0-00**

**PRO TIP!** The Storage Cover is non-branded so you can easily use it across most stock utility vehicles (fits universal 2-passenger utility vehicle size 125" L x 52" W x 68" H).

## GOLF



### FusionFit™ Info Card Holder

Promote your course activities on this FusionFit™ Information Card Holder with incomparable strength that easily stands up to everyday use in any temperature. Fits 2010 and newer DRIVE and Drive² cars with factory ClimaGuard Sun Top.

**JOB-F16L0-V0-02**

**NOTE:** Fits with ClimaGuard™ Sun Top.



### Yamaha Cooler Kit

Stay refreshed throughout the day with an innovative insulated beverage cooler. Rigorously tested to outperform other coolers, this addition conveniently holds eight 16oz bottles or twelve 12oz aluminum cans including extra space for ice. 544 cubic inch (2.35 gallon) capacity. Holds 9kg (19.8lb) total.

**GCA-J0B32-00-00**

## GOLF



### UMAX DropIn™ Cooler

With the UMAX DropIn™ Cooler, cold drinks are always conveniently stored and ready to go when and where you need them. Perfect for tournaments, company outings and more, this beverage storage solution provides instant profit gains.

**Cooler Lid Opening:** 24.75" L x 15.4" W

**Internal Volume:** 16,748in³ (72 gallons)

**Capacity\*:** 200 lbs total

**1** UMAX One.....**GCA-19HDR-OP-U1**

**2** UMAX Two.....**GCA-19HDR-OP-U2**

*\*Limited by unit's GVWR and payload capacity*



### Drain Kit for UMAX DropIn™ Cooler

Tired of all the mess from cleaning and draining your DropIn™ Cooler? No more water seeping under the cooler and sitting in the bed. Conveniently attached using dual drain outlets to make cleaning and draining a breeze. Connect hoses directly to the cooler to control the drainage of tank liquid to a designated location.

Includes 2 - all-brass construction on/off ball valves, 2 - 4ft. PVC reinforced hose with brass 3/4in GHT connectors, O-rings, and a 1-3/4 oz tube of pipe thread sealant.

**Fitment:** GCA-19HDR-OP-U1 and GCA-19HDR-OP-U2 UMAX DropIn™ Coolers by 19th Hole Cart LLC™.

**GCA-19UMD-RA-IN**

## LIGHTING AND ELECTRICAL



### USB Charge Socket (Set)

Allow players to conveniently charge devices on both sides of the vehicle, a win-win for drivers and passengers. Each USB socket can be easily installed in various locations on the UMAX. Fits all 2019-2024 UMAX and UMAX Rally models.

**ELECTRIC CARS**

**GCA-J0C70-00-00**

**GAS CARS**

**GCA-J0A70-00-00**

**NOTE:** Both electric and gas models include necessary fuse and voltage regulator. Uses factory mounts and plug-and-play harness.



### Waterproof USB Dual Charge Port

Add the luxury of a Waterproof USB Dual Charge Port to your utility car, boat, ATV, Side-by-Side, motorcycle, or even automobile. The USB charge port uses the same mounting hole and connectors as the DC receptacle, making upgrading to USB a snap. Fits any vehicle with a 12V DC power source. Wiring modifications required. Electric models require 48V Voltage Regulator Accessory Kit, J0J-H1910-V0-00 (sold separately).

**GCA-JW970-00-00**



# THE NEXT GENERATION OF LIGHT KITS

The UMAX Premium Light Upgrade Kit and the UMAX Ultra-Premium Light Upgrade Kit will light your path and keep others informed about your travels. Both Premium and Ultra-Premium Light Upgrade Kits include Yamaha's exclusive new plug-and-play wiring harness that is fully expandable for further upgrades, such as turn signal indicators, side markers, and center high-mount stop/tail/turn lights (for future expansion for custom applications).

- Plug-and-play installation
- Harness is weather-tight with sealed connectors
- Turn signal stalk incorporates the headlight off-low-high beam selector knob
- Adds high-beam functionality to factory UMAX LED headlights
- Turn signal handle integrated horn button
- Includes Yamaha's exclusive LED taillights (J0G-H4503-V0-00)
- All Yamaha Upgrade Light Kits include all necessary mounting hardware and detailed instructions with pictures
- Fits all UMAX, UMAX Rally, and UMAX Rally<sup>2+2</sup> models



Shown with solid amber accent light on.

### UMAX Premium Light Upgrade Kit

Features a plug-and-play upgradeable premium harness, all new phosphor-coated chip-on-board (COB) module that features full-power flashing amber LED front turn signals, the all-new basic amber LED front turn signal chip-on-board (COB) module, LED taillight and brake lights, front and rear LED turn signals, 4-way flasher, horn, and side reflex reflectors. Includes Yamaha's exclusive, automotive-style, premium turn signal stalk that incorporates the headlight on/off switch, turn signal handle, and integrated horn button.

Fits all UMAX, UMAX Rally, and UMAX Rally<sup>2+2</sup> models.

**J0G-H43C0-T0-00**



Shown with solid white accent light on.

### UMAX Ultra-Premium Light Upgrade Kit

Features everything from the Premium Kit, in addition to the all-new waterproof/dustproof premium white LED accent/amber LED front turn signal chip-on-board (COB) module with clear lens assembly.

Fits all UMAX, UMAX Rally, and UMAX Rally<sup>2+2</sup> models.

**J0G-H43C0-V0-00**



Shown with flashing amber turn signal on.

### Drive² Premium PTV Upgrade Kit (EFI/AC)

Features a plug-and-play upgradeable premium harness, all-new phosphor-coated chip-on-board (COB) module that features full-power flashing amber LED front turn signals, the all-new basic amber LED front turn signal chip-on-board (COB) module, 20-diode LED taillight and brake lights, front and rear LED turn signals, 4-way flasher, horn, and side reflex reflectors. Includes Yamaha's exclusive, automotive-style, premium turn signal stalk that incorporates the headlight on/off switch, turn signal handle, and integrated horn button.

Fits all Drive² PTV models.

**GCA-J0D12-01-PT**



### Drive² Ultra-Premium PTV Upgrade Kit

Features everything from the Premium Kit, in addition to the all-new waterproof/dustproof premium white LED accent/amber LED front turn signal chip-on-board (COB) module with clear lens assembly, as well as the all-new 26-LED sequential stop-tail-turn rear lights.

Fits all Drive² PTV models.

**GCA-J0D12-00-UP**

	PREMIUM		ULTRA-PREMIUM	
	PTVA	PTVE	PTVA	PTVE
Model Type	PTVA	PTVE	PTVA	PTVE
Model Code	J0D PTV QuieTech EFI	J0E PTV PowerTech AC	J0D PTV QuieTech EFI	J0E PTV PowerTech AC
Upgrade Light Kit Part Number	GCA-J0D12-01-PT		GCA-J0D12-00-UP	
Upgrade Light Kit Name	DR2PTV EFI J0D/AC J0E PREM UPG KT		DR2PTV EFI J0D/AC J0E ULT-PRM UPG KIT	
Harness	Plug-N-Play		Plug-N-Play	
Tail / Brake Light	20-LED Included		Sequential 26-LED	
4-Way Flasher	Included		Included	
Rear LED Turn Signals	Included		Included	
Front Turn Signals	Basic COB LED Amber		Premium LED Amber with Accent Light	
Relay Harness	-		Included	
Driver Harness	-		Included	
Side Reflectors	Included		Included	





**UMAX Headlight High/Low Switch**

Add the option to switch between high- or low-beam front LED headlight with our Headlight High/Low Switch. With easy plug-and-play installation in the front dash panel, it will seamlessly match the factory headlight on/off switch. Fits 2019-2024 UMAX Rally models.

**J0G-H25A0-V0-00**

**NOTE:** Will not work with Premium or Ultra-Premium Light Upgrade Kits.



**Backlit Yamaha Logo Light**

Add this Backlit Yamaha Logo Light anywhere from the front cowl of your DRIVE or Drive<sup>2</sup> vehicle. (Plug-and-play installation on Drive<sup>2</sup> PTV and Fleet models with Yamaha Genuine upgrade light kits.) Fits 2017-2024 Concierge 4/6 and Super Hauler models.

**J0B-H4104-V0-PC**



**UMAX Yamaha Backlit Logo**

Give your UMAX an intimidatingly gritty edge that'll make a statement wherever you go. Easily connects to factory headlight for plug-and-play wiring. Fits all 2019-2024 UMAX and UMAX Rally models.

**J0G-H4104-V0-00**

**NOTE:** Trimming of front grill required for installation.



**UMAX Cargo Bed Mat**

Keep your cargo bed in "fresh out of the box" condition with our wear-resistant, durable Cargo Bed Mat. Made from a proprietary 10mm-thick, reinforced, engineered rubber that slows bed wear as it reduces noise and resonance when transporting cargo. Also, the mat's rough-and-tough styling perfectly matches your UMAX vehicle's look while the aggressive lug pattern helps prevent cargo from sliding. Fits 2019-2024 UMAX Rally One EFI and UMAX Rally Two EFI/AC models.

**J0G-F7302-V0-00**

**NOTE:** Fits UMAX Two models as is. Cutting of mat required to fit UMAX One EFI models.



**UMAX Front Brush Guards**

Protect the bold look of the grill, hood, and cowl longer. Fits all 2019-2024 UMAX Rally models.

SPORT FRONT BRUSH GUARD

**J0G-F85F0-V0-00**

SPORT FRONT BRUSH GUARD WITH HEADLIGHT PROTECTION

**J0G-F85F0-R0-00**

**PRO TIP!** For even more protection from brush and debris, add the Rear Tubular Brush Guard (J0G-F85F0-S0-00) and Side Steps (J0G-F11E0-V0-00), both sold separately.

**NOTE:** Will not work with Range Picker Mount.



**UMAX Rear Arm Skid Plate**

Tackle rugged terrain with confidence after installing our Rear Arm Skid Plate to help guard against large rocks and other obstructive debris from harming your transaxle—all while perfecting your UMAX vehicle's tough styling. Fits all 2019-2024 UMAX Rally models.

**J0G-F21A0-V0-00**



**Drive<sup>2</sup> Front Brush Guard**

Protect the front end and headlights while adding a little rugged flair with this front brush guard that's designed to seamlessly integrate with the front profile all while creating a tough, aggressive look. Fits 2017-2024 Drive<sup>2</sup> Concierge 4/6 and Drive<sup>2</sup> Super Hauler models.

**GCA-J2G67-00-00**



## PROTECTION



### UMAX deFender

Guard yourself and your UMAX vehicle even more with our wide, off-road, four-piece fender flare kit, designed and engineered to perfectly match your Yamaha in every way. Fits all 2019-2024 UMAX Rally models.

DEFENDER (WIDE)

**J0G-F15E0-T0-00**

DEFENDER JR. (NARROW) (INSET)

**J0G-F15E0-V0-00**

**NOTE:** Use of 23" tall tires requires 20mm lift.

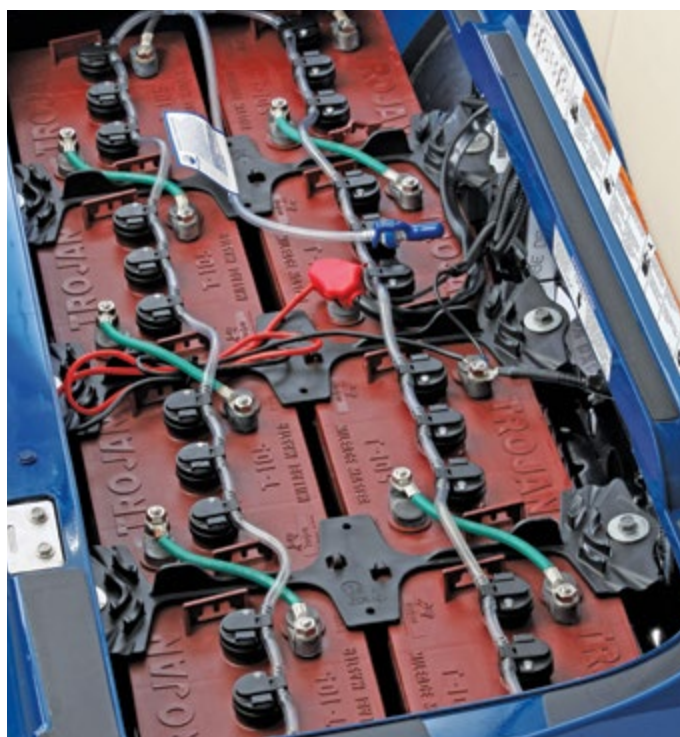


### Drive² Fender Flare Kit

Sporty styling adds an aggressive, tough look and feel while adding an extra level of protection from mud and water. Fender flares are made from a durable, injection-molded polypropylene, UV-resistant material. Fits all Drive² models including 2017-2024 Drive² Concierge 4/6 models.

**GCA-J2G56-00-00**

## SERVICE



### BFS™ Battery Watering System

Maximize the battery life of your Yamaha vehicle by using the BFS™ Battery Watering System that'll make routine maintenance a breeze. Low water levels in lead acid batteries are the primary cause of shortened battery life. Using a watering system saves time and money by filling the batteries simultaneously, providing a safer environment by reducing operators' exposure to battery acid. This accessory also improves battery life and overall performance. Fits 2019-2024 UMAX AC, 2017-2024 Drive² Concierge 4/6 AC, and Drive² Super Hauler AC models.

SIX 8-VOLT TROJAN T875

**GCA-JW286-30-00**

EIGHT 6-VOLT TROJAN T105

**GCA-JW286-40-00**

**NOTE:** Requires Gravity Tank (GCA-JW286-00-23), sold separately.

## SERVICE



### Deionizer

Increase your Yamaha vehicle's battery life and run time by using our Deionizer system—a cost-effective, effortless way to purify the water used for battery watering. Prevent the build-up of impurities over time with this simple addition to your routine service, and it'll make a substantial impact on your battery life. For use with Pro-Fill® by Flow-Rite® Regulated Hose Supply (sold separately).

**1 DEIONIZER**

**JN6-DEION-IZ-ER**

**2 REPLACEMENT PARTS - 600 REPLACEMENT CARTRIDGE**

**JN6-DEION-RP-LC**



### Pro-Fill® Regulated Water Supply Hose

If you plan to use your factory Trojan® HydroLink® watering system to fill multiple commercial cars in a quick succession, our Pro-Fill® Regulated Water Supply Hose is the perfect solution. For use with Pro-Fill® by Flow-Rite® or Trojan® HydroLink® watering systems. Will not work with Battery Watering Technologies.

**GCA-JW281-00-00**



### BFS™ Gravity Tank

Use the BFS™ Gravity Tank to add water to your Battery Watering System (GCA-JW286-30-00 or GCA-JW286-40-00)—sold separately—using the power of gravity versus manually pumping the water into the system. For use on BFS™ by Battery Watering Technologies systems.

**GCA-JW286-00-23**

**NOTE:** No Deionizer needed with this.



### Pro-Fill® Hand Pump

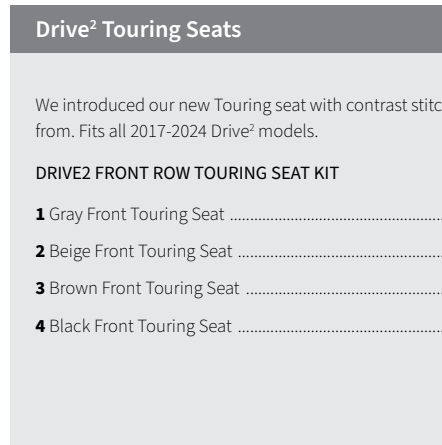
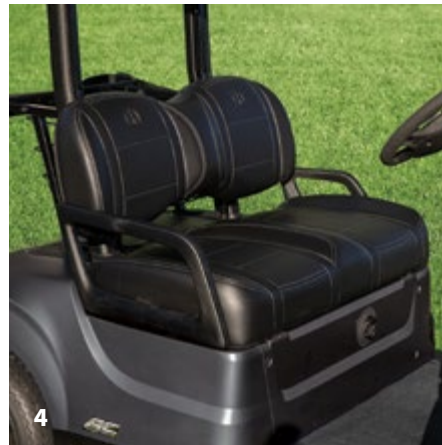
Manually add distilled water to your factory Trojan® HydroLink® watering system with this Pro-Fill® Hand Pump. For use with Pro-Fill® by Flow-Rite® or Trojan® HydroLink® watering systems. Will not work with Battery Watering Technologies.

**GCA-JW285-00-00**

**NOTE:** No Deionizer needed with this.



## PREMIUM SEATING

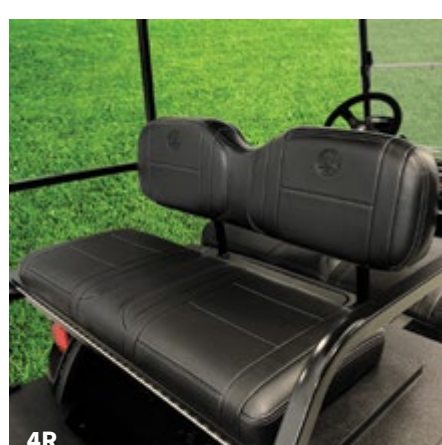


### Drive<sup>2</sup> Touring Seats

We introduced our new Touring seat with contrast stitching, embossed tuning fork logos and 4 colors to choose from. Fits all 2017-2024 Drive<sup>2</sup> models.

#### DRIVE2 FRONT ROW TOURING SEAT KIT

- 1 Gray Front Touring Seat ..... **JOB-K8410-R1-00**
- 2 Beige Front Touring Seat ..... **JOB-K8410-V1-00**
- 3 Brown Front Touring Seat ..... **JOB-K8410-S1-00**
- 4 Black Front Touring Seat ..... **JOB-K8410-T1-00**



### Classic Rear Facing Seat Kit with Upgraded Touring Seat

This Touring seat Cushion Set is a direct replacement for Yamaha's Classic Rear Facing Seat Kit featuring contrast stitching, embossed tuning fork logos and 4 colors to choose from. Fits all 2017-2024 Drive<sup>2</sup> with Rear Facing Seat Kit and all Adventurer Sport 2+2 models.

#### DRIVE<sup>2</sup> POWERTECH AC/QUIETECH EFI REAR FACING SEAT KIT WITH TOURING SEATS

- 1R Gray Rear Facing Touring Seat Kit..... **JOB-K8476-R0-00**
- 2R Beige Rear Facing Touring Seat Kit..... **JOB-K8476-V0-00**
- 3R Brown Rear Facing Touring Seat Kit..... **JOB-K8476-S0-00**
- 4R Black Rear Facing Touring Seat Kit..... **JOB-K8476-T0-00**

**NOTE:** Available now as factory installed option. Does not include front row Touring Seat (sold separately). Will not work with overhead audio system.

## STORAGE



### UMAX Cargo Bed Box

You've got a long workday planned. Leave none of your essentials behind with our heavy-duty, durable cargo box that doubles as a non-insulated cooler featuring an integrated drain plug. You'll enjoy easy installation and optimum capacity while matching your UMAX vehicle's uniquely rugged style. Fits 2019-2024 UMAX One Rally EFI and UMAX Two Rally EFI/AC models.

**JOG-F83P0-V0-00**

## TRIMS & ACCENTS



### Premium Side Mirror

The 4-1/8" x 7-3/4" convex mirror comes with breakaway feature helps eliminate damage. Made with durable ABS plastic. Ball-and-socket joint for easy adjustment. Fits either right or left side; sold individually. Universal fit for most golf cars with flat 1"-square mounting surface, or 3/4"-square when included rubber insert used.

**GCA-JC181-00-00**

## TOPS



### UMAX Sun Top Kit

Guard yourself against the Sun's glare, hanging brush, and other elements with the only sun top designed to completely match your UMAX vehicle in style and durability. Fits 2019-2024 UMAX One/Two Rally models.

**JOG-K84A0-V0-00**





**UMAX Hard Cab Enclosure**

It's 40 degrees out, the sun is just coming up over the trees and there's plenty of work to be done. With our hard cab system, you are sure to be comfortable, despite the elements. This polycarbonate cab system offers the perfect balance of visibility, quality, and comfort to your UMAX. Fits 2019-2024 UMAX One EFI, UMAX Two AC, and UMAX Two EFI.

**Cab enclosure consists of 4 components. All sold separately. Requires all 4 components:**

- |   |  |
|---|--|
| <b>1. UMAX WINDSHIELD</b>                                 | <b>3. SUNTOP KIT</b>                                       |
| Windshield, One-piece Clear ..... <b>JOG-K7200-V0-00</b>  | <b>JOG-K84A0-V0-00</b>                                     |
| Windshield, Hinged Clear ..... <b>JOG-K7200-S0-00</b>     |  |
| Windshield, One-piece Tinted ..... <b>JOG-K7200-T0-00</b> | <b>4. HARD CAB ENCLOSURE</b>                               |
| Windshield, Hinged Tinted ..... <b>JOG-K7200-R0-00</b>    | Fits 2019-2024 UMAX One EFI, UMAX Two AC, and UMAX Two EFI |
|   | <b>JOG-K81C0-V0-00</b>                                     |
| <b>2. POLYCARBONATE REAR PANEL</b>                        |  |
| Fits 2019-2024 UMAX One EFI, UMAX Two AC, UMAX Two EFI    |  |
| <b>JOG-K750A-V0-00</b>                                    |  |



**UMAX Windshields**

Completely redesigned and re-engineered to be the best in the industry. Made from polycarbonate for higher impact resistance, greater tensile and more flexural strength and UV-resistance. The fold-down windshield has a flexible, industry-first mechanical hinge that has a chemically-bonded weld for superior strength. Press-in rubber latches for the top grip and bottom grip clips provide a more secure, yet quiet fit—and is effortless to store in the folded position. Fits all 2019-2024 UMAX Rally models.

- |                                |                        |             |
|--------------------------------|------------------------|-------------|
| <b>1</b> One-piece Clear.....  | <b>JOG-K7200-V0-00</b> | (NOT SHOWN) |
| <b>2</b> One-piece Tinted..... | <b>JOG-K7200-T0-00</b> | (NOT SHOWN) |
| <b>3</b> Hinged Clear.....     | <b>JOG-K7200-S0-00</b> |             |
| <b>4</b> Hinged Tinted.....    | <b>JOG-K7200-R0-00</b> | (NOT SHOWN) |



**DFK UMAX Hard Cab Enclosure**

The UMAX DFK Hard Cab promises the best in durable, reliable protection. Designed to withstand harsh weather elements, this fully-sealed cab is outfitted with laminated glass, sliding windows, 360° visibility and windshield wipers. Fits 2019-2024 UMAX Two AC, UMAX Two EFI, Rally Two EFI and Rally Two AC.

**VDF-DFKCB-74-00**



**DFK Drive² Hard Cab Enclosure**

The Drive² Hard Cab brings cold weather protection to new levels. Featuring a laminated windshield, polycarbonate doors, 360° visibility and more.

**VDF-DFKCB-75-00**



**Yamaha Commercial Car Windshields**

Completely redesigned and re-engineered to be the best in the industry, these Yamaha windshields are made from polycarbonate for higher impact-resistance, greater tensile, flexural strength, and more UV-resistance.

The fold-down windshield has a flexible, mechanical hinge made with a chemically bonded weld for superior strength. Press-in rubber latches for the top and bottom grip clips provide a more secure and quiet fit, making it effortless to store in the folded position.

Fits all 2017-2024 Drive² Concierge 4/6 and Drive² Super Hauler models.

- |   |                        |
|---|------------------------|
| <b>1</b> One-piece Clear.....           | <b>JOB-K7200-01-00</b> |
| <b>2</b> One-piece Tinted.....          | <b>JOB-K7200-11-00</b> |
| <b>3</b> Hinged Clear.....              | <b>JOB-K7200-24-00</b> |
| <b>4</b> Hinged Tinted.....             | <b>JOB-K7200-34-00</b> |
| <b>5</b> Hinged Clear DR2 Hardcoat..... | <b>JOB-K7200-50-00</b> |
|   | (NOT SHOWN)            |



**Drive² Three-Sided Enclosure**

This three-sided taupe enclosure perfectly complements the Club Pro Products® Cabana Golf Bag. Install in as little as five minutes with a patented extrusion system. The back panel allows access to the sweater basket. The cover disappears into a zippered sleeve when not in use. Fits 2016-2024 Drive² Concierge 4/6 and Drive² Super Hauler models.

- |            |                        |
|------------|------------------------|
| Black..... | <b>GCA-J0A63-00-BK</b> |
| Taupe..... | <b>GCA-J0A63-00-00</b> |



**Drive² Three-Sided Enclosures**

Our UV- and mildew/mold-resistant over-the-top enclosure is quick and easy to install thanks to a trackless design, so you can seamlessly move it from car to car without hassle. Also features heat-welded seams and heavy-duty, marine-grade, 1300D vinyl or marine-grade, 600D, 100% solution-dyed polyester fabric along with hook-and-loop straps for high-level security. Fits 2016-2024 Drive² Concierge 4/6 and Drive² Super Hauler models.

- |                      |                        |
|----------------------|------------------------|
| Fabric - Taupe.....  | <b>GCA-J0A65-00-SD</b> |
| Vinyl - White.....   | <b>GCA-J0A65-00-00</b> |
| Acrylic - Linen..... | <b>GCA-J0A65-00-LN</b> |

**NOTE:** Requires modifications to front support sleeves when used with Drive² polycarbonate windshield with mechanical hinge.





**10" 12-Spoke J-Series Alloy Wheel Assembly**

Give your Personal Transportation Vehicle a classic edge with this easy, 12-spoke J-Series Direct Dependent Alloy Wheel Assembly. Fits all 2015-2016 DRIVE PTV and 2017-2024 Drive<sup>2</sup> PTV models.

- 1 Silver ..... **GCA-J0E51-00-SL**
- 2 Black Machine ..... **GCA-J0E51-00-BM**
- 3 All-Satin Black ..... **GCA-J0E51-00-SB**
- 4 Gold Machine ..... **GCA-J0E51-00-GD**



**10" 16-Spoke V-Series Wheel Assembly**

Incorporate your bold style through your Drive<sup>2</sup> with our 10" 16-spoke wheel assembly—includes a chrome center cap with Yamaha emblem, chrome lug nuts, a chrome valve stem cap, and a chrome valve stem cover. Fits 2015-2016 DRIVE PTV and 2017-2024 Drive<sup>2</sup> PTV models.

- Silver ..... **GCA-J0E51-20-SL**
- Black ..... **GCA-J0E51-20-BM**

**10" Casino Alloy Wheel Assembly**

Dress up your Drive<sup>2</sup> with our 10" Casino Alloy Wheel Assembly that daringly mixes stunning angles with detailed, black-accented finesse. Fits 2015-2016 DRIVE PTV and 2016-2024 Drive<sup>2</sup> PTV models.

- Black Machine ..... **GCA-JC352-00-BK**
- Silver ..... **GCA-JC352-00-SL**

**Kenda UMAX 6 PLY UPG 10x7 V-Window**

High style meets high functionality in the Kenda UMAX 6 PLY UPG 10x7 V-Window tires. With a handsome design fused with the ability to scale any terrain, this tire is one that will leave onlookers talking. Fits all UMAX One/Two models.

**J0G-F510M-B0-SV**



**12" 16-Spoke V-Series Radial Alloy Wheel Assembly**

V-Series alloy wheel assembly features the Kenda Kruizer KR20A tire, the Personal Transportation Vehicle industry's first true automotive steel-belted radial design tire specifically designed for Low Speed (LSV) and Personal Transportation Vehicles (PTV) that are approved to be used on golf courses and in golf course communities. Combined with the all-new V-Series alloy wheel by Wheel Mate Products for the ultimate driving experience. Fits 2015-2016 The DRIVE PTV and 2017-2024 Drive<sup>2</sup> PTV models.

- 1 Silver Machine ..... **GCA-J0D52-2L-SL** (Driver Side) | **GCA-J0D52-2R-SL** (Passenger Side)
- 2 Gunmetal ..... **GCA-J0D52-2L-GM** (Driver Side) | **GCA-J0D52-2R-GM** (Passenger Side)
- 3 Bronze ..... **GCA-J0D52-2L-BZ** (Driver Side) | **GCA-J0D52-2R-BZ** (Passenger Side)
- 4 Black Machine ..... **GCA-J0D52-2L-BM** (Driver Side) | **GCA-J0D52-2R-BM** (Passenger Side)
- 5 Satin Black ..... **GCA-J0D52-2L-SB** (Driver Side) | **GCA-J0D52-2R-SB** (Passenger Side)



**12" Motohammer Battle Wheel**

Scale any terrain with the 12" Motohammer Battle Wheel. Built with abundant treads and a sharp silhouette, this tire is one your riders can always rely on. Fits all UMAX Rally and UMAX Rally<sup>2</sup> models.

**VDF-12RLY-27-27**



**12" Motohammer Battle Wheel**

Scale any terrain with the 12" Motohammer Battle Wheel. Built with abundant treads and a sharp silhouette, this tire is one your riders can always rely on. Fits all UMAX Rally and UMAX Rally<sup>2</sup> models.

**VDF-12RLY-27-27**



# YAMALUBE®

Others simply follow industry standards.  
**WE PREFER TO SET THEM.**

In 1967, after testing hundreds of lubrication combinations, Leo Lake developed a blend that became the iconic Yamalube® brand the world knows today.

To date, Yamalube® remains the only oil built around the stringent demands, operating characteristics and applications of not only Yamaha engines, but all powersport engines. With over 50 years of success, we still strive to make the best even better.

## QUALITY CARE PRODUCTS



### Yamalube® UMAX Tune-Up Kit

Think your UMAX vehicle wants the same oil as a minivan? Give it the care only the most rugged utility car on the market deserves: Yamalube® (an oil kit specifically crafted to support the UMAX performance, power, and versatility). Fits all 2024 UMAX EFI models.

#### CONTAINS:

- Yamalube® 10W-30 Mineral Oil (37.2 oz.)
- Genuine Yamaha Air Filter (QTY. 1)
- Genuine Yamaha Pre-Air Filter (QTY. 1)
- NGK® Spark Plug (QTY. 1)
- Drain Plug Gasket (QTY. 1)

**LUB-GCUMX-MT-KT**



### Yamalube® Drive² Tune-Up Kit

Peak performance in a kit is what you'll be giving your Drive² car with the Yamalube® Drive² Tune-Up Kit. Keep your vehicle at its best, longer. Fits 2016-2024 Drive² EFI models.

#### CONTAINS:

- Yamalube® 10W-30 Mineral Oil (1 Qts.)
- Genuine Yamaha Air Filter (QTY. 1)
- Genuine Yamaha Pre-Air Filter (QTY. 1)
- NGK® Spark Plug (QTY. 1)
- Drain Plug Gasket (QTY. 1)

**LUB-GCDR2-MT-KT**



### Fuel Med RX

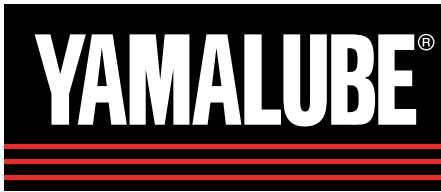
Prevent fuel system corrosion, improve performance, and extend the life of your Yamaha by using Fuel Med RX. Routine use will fight back phase separation, moisture damage, dissolve gum and varnish in your carburetion system—all while extending spark plug life and stabilizing fuel for winterization. Universal fit. This product can be utilized in all gas engines (lawn mowers, weed eaters and garden tillers) not just a Yamaha!

3.2 OZ. BOTTLE (BLENDED)  
**ACC-FUELM-RX-04** (QTY. 48\*)

8 OZ. BOTTLE (CONCENTRATED);  
CHAMBERED BOTTLE FOR EASY MEASURING  
**ACC-FUELM-RX-08** (QTY. 12\*)

**NOTE:** Use continuous treat rate if in-season fuel will sit in a tank for more than seven days. The storage treat rate keeps fuel fresh for up to one year.





# PERFECT PROTECTION

Yamalube® Quality Care Products.  
Specifically Formulated For Your Commercial Car.



### For the Right Protection, the Pros Know Where to Go

UMAX vehicle's work hard all day. You need protection that does too. Make sure your Yamaha vehicle is always up for the task with high-quality Yamalube® Quality Care Products.

### Better For Your Investment

Protect your Yamaha vehicle from the wear and tear of nearly continuous use with Yamalube® 10W-30 All-purpose Commercial Car oil. It includes high-quality mineral base stocks and provides incredible film strength.

### Better Lubrication

At Yamaha, we have stringent lubrication standards for all of our vehicles—and other off-the-shelf oils just aren't up to par. That's why we created our own. Our factory-approved engine oils include unparalleled mineral base stocks and technologically superior additives, providing excellent protection that matches your engine's demand.

### Better Protection

Yamalube® Performance All-purpose Commercial Car oil is available in the precise multi-grade viscosity recommended for your four-stroke Yamaha vehicle, and meets or exceeds all industry standards.

## QUALITY CARE PRODUCTS



1

### YamaClean® Pro-Wash Spray

YamaClean® Pro-Wash Spray is a biodegradable vehicle wash that removes grime and soil. It rinses clean and is the most effective way to remove grime, grease, and bugs from most surfaces so to always keep your commercial car looking new.

32 OZ. BOTTLE  
ACC-YAMAC-PW-SP (QTY. 12\*)  
1 GAL. BOTTLE  
ACC-YAMAC-PW-GL (QTY. 4\*)



2

### YamaCoat™ Plastic Coating

A high-quality plastic coating that helps maintain the color and surface-finish of plastic for that elusive factory-finish look. The unique comfort tip gives an even spray on components to be treated. Once applied, simply wipe dry or leave wet to help inhibit adhesion of mud and dirt for easy cleanup. Ideal for use on commercial cars, motocross and off-road motorcycles, ATVs, Side-by-Sides, and any other vehicles where plastic components are used.

10 OZ. CAN  
ACC-YAMAC-OA-TC (QTY. 12\*)



3

### Spray Polish and Instant Detailer

This quick detailer will restore a lustrous shine to paint, chrome, glass, and smooth plastics like visors, windshields, and gauges. This polish gives textured plastics, rubber, and vinyl a beautiful satin finish. Anti-static properties repel dust and dirt to keep that shine.

14 OZ. CAN  
ACC-SPRAY-PL-SH (QTY. 12\*)



4

### Yamashield™

Creates a non-conductive shield on surfaces that are exposed to the elements and provides extreme rust and corrosion protection, preserving metal components and electrical connections from moisture.

12 OZ. CAN  
ACC-YAMSH-LD-00 (QTY. 12\*)



## UMAX ONE EFI

### DIMENSIONS

OVERALL LENGTH	111.45 in (283.1 cm)
OVERALL HEIGHT (NO SUN TOP)	48.54 in (123.3 cm)
OVERALL HEIGHT (WITH SUN TOP)	74.02 in (188 cm)
OVERALL WIDTH	49.33 in (125.3 cm)
WHEELBASE	66.18 in (168.1 cm)
FRONT WHEEL TREAD	39.96 in (101.5 cm)
REAR WHEEL TREAD	40.19 in (102.1 cm)
MINIMUM GROUND CLEARANCE	4.56 in (11.6 cm)
CURB WEIGHT (WITH SUN TOP, BATTERY, OIL AND GASOLINE)	452 kg (997 lb)

### GENERAL

FUEL TANK CAPACITY	5.2 US GAL (20 LITERS)
TIRE SIZE	20x10-10 4-ply Monitor K389 (front) K500 (rear)
SEATING CAPACITY	Two persons
AVAILABLE MODEL COLORS	Glacier Metallic: Coral Red, Bluestone, Evergreen, Carbon
AVAILABLE SEAT & SUN TOP COLOR	Black
WARRANTY	Standard 2-year limited vehicle warranty
STANDARD RECEIVER HITCH	2"

### ENGINE / DRIVE TRAIN

ENGINE TYPE	Yamaha-built 402 cc, Low Emission Single Cylinder 60deg Incline OHV
LUBRICATION SYSTEM	Splash-style positive oil lubrication
OIL CAPACITY	1.16 U.S. quart (1.1 liter, 1100 cc), Yamalube 10W-30
AIR CLEANER	Two-stage, urethane-foam pre-cleaner, and high-capacity pleated paper cartridge
COOLING SYSTEM	Forced air
FUEL SYSTEM	Electronic fuel injection
STARTING SYSTEM	Starter generator with pedal start system
HORSEPOWER	3600 rpm (14.25 hp)

### CHASSIS

FRAME	HybriCore™ Chassis features a robotic welded automotive ladder-style steel frame protected with a multi-step full-immersion phosphate treatment, electro-deposition epoxy-based coating, and an electrostatic applied polyester/urethane powder topcoat
BODY	Custom-formulated thermoplastic olefin painted with a two-part top coat of high-luster automotive-grade polyurethane
STEERING	Self-compensating double reduction helical rack-and-pinion
FRONT SUSPENSION	Tru-Trak II™ fully independent automotive-style strut suspension
REAR SUSPENSION	Unit swing arm with DUAL RATE coil springs over hydraulic shock absorbers
BRAKES	Self-adjusting mechanical, rear wheel drum brakes
CARGO BED MAX LOAD	300 lb
ROLLING TRAILER MAX WEIGHT	800 lb
MAX TONGUE WEIGHT	100 lb
VEHICLE RATED CAPACITY	800 lb
CARGO BED DIMENSIONS	33.2" L x 45.9" W x 11.9" H

### PERFORMANCE

MAX FORWARD SPEED	17.5 mph (28 km/h)
MAX REVERSE SPEED	13.1 mph (21 km/h)
MINIMUM TURNING RADIUS	3.48 m
G.V.W.	1,708 lb

## UMAX TWO EFI

### DIMENSIONS

OVERALL LENGTH	119.37 in (303.2 cm)
OVERALL HEIGHT (NO SUN TOP)	48.54 in (123.3 cm)
OVERALL HEIGHT (WITH SUN TOP)	74.02 in (188 cm)
OVERALL WIDTH	49.33 in (125.3 cm)
WHEELBASE	77.2 in (196.1 cm)
FRONT WHEEL TREAD	40.27 in (102.3 cm)
REAR WHEEL TREAD	40.19 in (102.1 cm)
MINIMUM GROUND CLEARANCE	4.52 in (11.5 cm)
CURB WEIGHT (WITH SUN TOP, BATTERY, OIL AND GASOLINE)	483 kg (1064 lb)

### GENERAL

FUEL TANK CAPACITY	5.2 U.S. gal (20 liters)
TIRE SIZE	20x10-10 4-ply Monitor K389 (front) K500 (rear)
SEATING CAPACITY	Two persons
AVAILABLE MODEL COLORS	Glacier Metallic: Coral Red, Bluestone, Evergreen, Carbon
AVAILABLE SEAT & SUN TOP COLOR	Black
WARRANTY	Standard 2-year limited vehicle warranty
STANDARD RECEIVER HITCH	2"

### ENGINE / DRIVE TRAIN

ENGINE TYPE	Yamaha-built 402 cc, Low Emission Single Cylinder 60deg Incline OHV
LUBRICATION SYSTEM	Splash-style positive oil lubrication
OIL CAPACITY	1.16 U.S. quart (1.1 liter, 1100 cc), Yamalube 10W-30
AIR CLEANER	Two-stage, urethane-foam pre-cleaner, and high-capacity pleated paper cartridge
COOLING SYSTEM	Forced air
FUEL SYSTEM	Electronic fuel injection
STARTING SYSTEM	Starter generator with pedal start system
HORSEPOWER	3600 rpm (14.25 hp)

### CHASSIS

FRAME	HybriCore™ Chassis features a robotic welded automotive ladder-style steel frame protected with a multi-step full-immersion phosphate treatment, electro-deposition epoxy-based coating, and an electrostatic applied polyester/urethane powder topcoat
BODY	Custom-formulated thermoplastic olefin painted with a two-part top coat of high-luster automotive-grade polyurethane
STEERING	Self-compensating double reduction helical rack-and-pinion
FRONT SUSPENSION	Tru-Trak II™ fully independent automotive-style strut suspension
REAR SUSPENSION	Unit swing arm with DUAL RATE coil springs over hydraulic shock absorbers
BRAKES	Self-adjusting mechanical, front and rear wheel drum brakes
CARGO BED MAX LOAD	800 lb
ROLLING TRAILER MAX WEIGHT	1,200 lb
MAX TONGUE WEIGHT	150 lb
VEHICLE RATED CAPACITY	1,500 lb
CARGO BED DIMENSIONS	41.1" L x 45.9" W x 11.9" H

### PERFORMANCE

MAX FORWARD SPEED	17.5 mph (28 km/h)
MAX REVERSE SPEED	13.1 mph (21 km/h)
MINIMUM TURNING RADIUS	3.98 m
G.V.W.	2,533 lb

## UMAX TWO AC

### DIMENSIONS

OVERALL LENGTH	119.37 in (303.2 cm)
OVERALL HEIGHT (NO SUN TOP)	48.54 in (123.3 cm)
OVERALL HEIGHT (WITH SUN TOP)	74.02 in (188 cm)
OVERALL WIDTH	49.33 in (125.3 cm)
WHEELBASE	77.2 in (196.1 cm)
FRONT WHEEL TREAD	40.27 in (102.3 cm)
REAR WHEEL TREAD	40.19 in (102.1 cm)
MINIMUM GROUND CLEARANCE	4.52 in (11.5 cm)
CURB WEIGHT (WITH SUN TOP)	658 kg (1451 lb)

### GENERAL

TIRE SIZE	20x10-10 4-ply rating Monitor K389 (front) K500 (rear)
SEATING CAPACITY	Two persons
AVAILABLE MODEL COLORS	Glacier Metallic: Coral Red, Bluestone, Evergreen, Carbon
AVAILABLE SEAT & SUN TOP COLOR	Black
WARRANTY	Standard 2-year limited vehicle warranty
STANDARD RECEIVER HITCH	2"

### ENGINE/ DRIVE TRAIN

MOTOR	48-volt AC
OUTPUT RATING	6.7 hp (5.0 kW for 60 minutes)
MOTOR CONTROL UNIT	NEOS 350 amp AC controller by Toyota Industries Corporation
BATTERIES	Standard: Six 8-volt Trojan T-105 Batteries

### CHASSIS

FRAME	HybriCore™ Chassis features a robotic-welded, automotive ladder-style steel frame, protected with a multi-step full-immersion phosphate treatment, electro-deposition epoxy-based coating, and an electrostatic applied polyester/urethane powder topcoat
BODY	Custom-formulated thermoplastic olefin, painted with a two-part top coat of high-luster automotive-grade polyurethane
STEERING	Self-compensating double reduction helical rack-and-pinion
FRONT SUSPENSION	Tru-Trak II™ fully independent automotive-style strut suspension
REAR SUSPENSION	Unit swing arm with DUAL RATE coil springs over hydraulic shock absorbers
BRAKES	Self-adjusting mechanical, front and rear wheel drum brakes
CARGO BED MAX LOAD	800 lb
ROLLING TRAILER MAX WEIGHT	1,200 lb
MAX TONGUE WEIGHT	150 lb
VEHICLE RATED CAPACITY	1,500 lb
CARGO BED DIMENSIONS	41.1" L x 45.9" W x 11.9" H

### PERFORMANCE

MAX FORWARD SPEED	17.5 mph (28 km/h)
MAX REVERSE SPEED	6.2 mph (10 km/h)
MINIMUM TURNING RADIUS	3.98 m
G.V.W.	2,910 lb





## RALLY ONE EFI

DIMENSIONS	
OVERALL LENGTH	114.6 in (291.2 cm)
OVERALL HEIGHT (NO SUN TOP)	50.7 in (128.8 cm)
OVERALL HEIGHT (WITH SUN TOP)	74.02 in (188 cm)
OVERALL WIDTH	53.5 in (136 cm)
WHEELBASE	66.3 in (168.3 cm)
FRONT WHEEL TREAD	40.9 in (104 cm)
REAR WHEEL TREAD	41.3 in (104.8 cm)
MINIMUM GROUND CLEARANCE	6 in (15.2 cm)
CURB WEIGHT (WITH SUN TOP, BATTERY, OIL AND GASOLINE)	470 kg (1036 lb)

GENERAL	
FUEL TANK CAPACITY	5.2 U.S. gal (20 LITERS)
TIRE SIZE	23x10.5-12 4-ply Monitor K389 (front) K500 (rear)
SEATING CAPACITY	Two persons
AVAILABLE MODEL COLORS	Glacier Metallic: Coral Red, Bluestone, Evergreen, Carbon
AVAILABLE SEAT & SUN TOP COLOR	Black
WARRANTY	Standard 2-year limited vehicle warranty
STANDARD RECEIVER HITCH	2"

ENGINE / DRIVE TRAIN	
ENGINE TYPE	Yamaha-built, 402 cc, low-emission single cylinder 60° incline OHV
LUBRICATION SYSTEM	Splash-style positive oil lubrication
OIL CAPACITY	1.16 U.S. quart, (1.1 liter, 1100 cc), Yamalube 10W-30
AIR CLEANER	Two-stage, urethane-foam pre-cleaner, and high-capacity pleated paper cartridge
COOLING SYSTEM	Forced air
FUEL SYSTEM	Electronic fuel injection
STARTING SYSTEM	Starter generator with pedal start system
HORSEPOWER	3600 rpm (14.25 hp)

CHASSIS	
FRAME	HybriCore™ Chassis features a robotic welded automotive ladder-style steel frame protected with a multi-step full-immersion phosphate treatment, electro-deposition epoxy-based coating, and an electrostatic applied polyester/urethane powder topcoat
BODY	Custom-formulated thermoplastic olefin painted with a two-part top coat of high-luster automotive-grade polyurethane
STEERING	Self-compensating double reduction helical rack-and-pinion
FRONT SUSPENSION	Tru-Trak II™ fully independent automotive-style strut suspension
REAR SUSPENSION	Fully independent automotive-style strut suspension
BRAKES	Self-adjusting mechanical, rear wheel drum brakes
CARGO BED MAX LOAD	300 lb
ROLLING TRAILER MAX WEIGHT	800 lb
MAX TONGUE WEIGHT	100 lb
VEHICLE RATED CAPACITY	800 lb
CARGO BED DIMENSIONS	33.2" L X 45.9" W x 11.9" H

PERFORMANCE	
MAX FORWARD SPEED	17.5 mph (28 km/h)
MAX REVERSE SPEED	13.1 mph (21km/h)
MINIMUM TURNING RADIUS	3.48 m
G.V.W.	1,708 lb

## RALLY TWO EFI

DIMENSIONS	
OVERALL LENGTH	122.6 in (311.3 cm)
OVERALL HEIGHT (NO SUN TOP)	50.7 in (128.8 cm)
OVERALL HEIGHT (WITH SUN TOP)	74.02 in (188 cm)
OVERALL WIDTH	53.5 in (136 cm)
WHEELBASE	77.3 in (196.3 cm)
FRONT WHEEL TREAD	41.3 in (104.8 cm)
REAR WHEEL TREAD	41.3 in (104.8 cm)
MINIMUM GROUND CLEARANCE	6 in (15.2 cm)
CURB WEIGHT (WITH SUN TOP, BATTERY, OIL AND GASOLINE)	501 kg (1105 lb)

GENERAL	
FUEL TANK CAPACITY	5.2 US GAL (20 LITERS)
TIRE SIZE	23x10.5-12 4-ply Monitor K389 (front) K500 (rear)
SEATING CAPACITY	Two persons
AVAILABLE MODEL COLORS	Glacier Metallic: Coral Red, Bluestone, Evergreen, Carbon
AVAILABLE SEAT & SUN TOP COLOR	Black
WARRANTY	Standard 2-year limited vehicle warranty
STANDARD RECEIVER HITCH	2"

ENGINE / DRIVE TRAIN	
ENGINE TYPE	Yamaha-built, 402 cc, low-emission single cylinder 60° incline OHV
LUBRICATION SYSTEM	Splash-style positive oil lubrication
OIL CAPACITY	1.16 U.S. quart (1.1 liter, 1100 cc), Yamalube 10W-30
AIR CLEANER	Two-stage, urethane-foam pre-cleaner, and high-capacity pleated paper cartridge
COOLING SYSTEM	Forced air
FUEL SYSTEM	Electronic fuel injection
STARTING SYSTEM	Starter generator with pedal start system
HORSEPOWER	3600 rpm (14.25 hp)

CHASSIS	
FRAME	HybriCore™ Chassis features a robotic welded automotive ladder-style steel frame protected with a multi-step full-immersion phosphate treatment, electro-deposition epoxy-based coating, and an electrostatic applied polyester/urethane powder topcoat
BODY	Custom-formulated thermoplastic olefin painted with a two-part top coat of high-luster automotive-grade polyurethane
STEERING	Self-compensating double reduction helical rack-and-pinion
FRONT SUSPENSION	Tru-Trak II™ fully independent automotive-style strut suspension
REAR SUSPENSION	Unit swing arm with DUAL RATE coil springs over hydraulic shock absorbers
BRAKES	Self-adjusting mechanical, front and rear wheel drum brakes
CARGO BED MAX LOAD	800 lb
ROLLING TRAILER MAX WEIGHT	1,500 lb
MAX TONGUE WEIGHT	150 lb
VEHICLE RATED CAPACITY	1,500 lb
CARGO BED DIMENSIONS	41.1" L X 45.9" W x 11.9" H

PERFORMANCE	
MAX FORWARD SPEED	17.5 mph (28 km/h)
MAX REVERSE SPEED	13.1 mph (21km/h)
MINIMUM TURNING RADIUS	3.98 m
G.V.W.	2,533 lb

## RALLY TWO AC

DIMENSIONS	
OVERALL LENGTH	122.6 in (311.3 cm)
OVERALL HEIGHT (NO SUN TOP)	50.7 in (128.8 cm)
OVERALL HEIGHT (WITH SUN TOP)	74.02 in (188 cm)
OVERALL WIDTH	53.5 in (136 cm)
WHEELBASE	77.3 in (196.3 cm)
FRONT WHEEL TREAD	41.3 in (104.8 cm)
REAR WHEEL TREAD	41.3 in (104.8 cm)
MINIMUM GROUND CLEARANCE	6 in (15.2 cm)
CURB WEIGHT (WITH SUN TOP)	676 kg (1490 lb)

GENERAL	
TIRE SIZE	23x10.5-12 4-ply Monitor K389 (front) K500 (rear)
SEATING CAPACITY	Two persons
AVAILABLE MODEL COLORS	Glacier Metallic: Coral Red, Bluestone, Evergreen, Carbon
AVAILABLE SEAT & SUN TOP COLOR	Black
WARRANTY	Standard 2-year limited vehicle warranty
STANDARD RECEIVER HITCH	2"

ENGINE / DRIVE TRAIN	
MOTOR	48-volt AC
OUTPUT RATING	6.7 hp (5.0 kW)
MOTOR CONTROL UNIT	NEOS 350 amp AC controller by Toyota Industries Corporation
BATTERIES	Standard: Eight 6-volt Trojan T-105 Batteries

CHASSIS	
FRAME	HybriCore™ Chassis features a robotic welded automotive ladder-style steel frame protected with a multi-step full-immersion phosphate treatment, electro-deposition epoxy-based coating, and an electrostatic applied polyester/urethane powder topcoat
BODY	Custom-formulated thermoplastic olefin painted with a two-part top coat of high-luster automotive-grade polyurethane
STEERING	Self-compensating double reduction helical rack-and-pinion
FRONT SUSPENSION	Tru-Trak II™ fully independent automotive-style strut suspension
REAR SUSPENSION	Unit swing arm with DUAL RATE coil springs over hydraulic shock absorbers
BRAKES	Self-adjusting mechanical, front and rear wheel drum brakes
CARGO BED MAX LOAD	800 lb
ROLLING TRAILER MAX WEIGHT	1,500 lb
MAX TONGUE WEIGHT	150 lb
VEHICLE RATED CAPACITY	1,500 lb
CARGO BED DIMENSIONS	41.1" L X 45.9" W x 11.9" H

PERFORMANCE	
MAX FORWARD SPEED	17.5 mph (28 km/h)
MAX REVERSE SPEED	6.2 mph (10 km/h)
MINIMUM TURNING RADIUS	3.98 m
G.V.W.	2,910 lb





## RALLY 2+2 EFI

### DIMENSIONS

OVERALL LENGTH	134.37 in (341.3 cm)
OVERALL HEIGHT (NO SUN TOP)	57.48 in (146 cm)
OVERALL HEIGHT (WITH SUN TOP)	77.20 in (196.1 cm)
OVERALL WIDTH	53.54 in (136 cm)
WHEELBASE	77.28 in (196.3 cm)
FRONT WHEEL TREAD	41.26 in (104.8 cm)
REAR WHEEL TREAD	41.26 in (104.8 cm)
MINIMUM GROUND CLEARANCE	5.94 in (15.1 cm)
CURB WEIGHT	610 kg (1345 lb)

### GENERAL

FUEL TANK CAPACITY	5.2 US GAL (20 LITERS)
TIRE SIZE	23x10.5-12 4-ply Monitor K389 (front) K500 (rear)
SEATING CAPACITY	Four persons
AVAILABLE MODEL COLORS	Glacier Metallic: Coral Red, Bluestone, Cyan, Onyx, Carbon, Matte: Titan
AVAILABLE SEAT & SUN TOP COLOR	Black
WARRANTY	Standard 2-year limited vehicle warranty

### ENGINE / DRIVE TRAIN

ENGINE TYPE	Yamaha-built 402 cc, Low Emission Single Cylinder 60deg Incline OHV
LUBRICATION SYSTEM	Splash-style positive oil lubrication
OIL CAPACITY	1.16 U.S. quart (1.1 liter, 1100 cc), Yamalube 10W-30
AIR CLEANER	Two-stage, urethane-foam pre-cleaner, and high-capacity pleated paper cartridge
COOLING SYSTEM	Forced air
FUEL SYSTEM	Electronic fuel injection
STARTING SYSTEM	Starter generator with pedal start system
HORSEPOWER	3600 rpm (14.25 hp)

### CHASSIS

FRAME	HybriCore™ Chassis features a robotic welded automotive ladder-style steel frame protected with a multi-step full-immersion phosphate treatment, electro-deposition epoxy-based coating, and an electrostatic applied polyester/urethane powder topcoat
BODY	Custom-formulated thermoplastic olefin painted with a two-part top coat of high-luster automotive-grade polyurethane
STEERING	Self-compensating double reduction helical rack-and-pinion
FRONT SUSPENSION	Tru-Trak II™ fully independent automotive-style strut suspension
REAR SUSPENSION	Unit swing arm with DUAL RATE coil springs over hydraulic shock absorbers
BRAKES	Mechanical, 4-wheel drum
FLIP-SEAT CARGO BED MAX LOAD	250 lb
MAXIMUM COMBINED LOAD WITH TWO PASSENGERS AND CARGO	400 lb
VEHICLE RATED CAPACITY	1,000 lb

### PERFORMANCE

MAX FORWARD SPEED	15 mph (24.1 km/h)
MAX REVERSE SPEED	11.2 mph (18 km/h)
MINIMUM TURNING RADIUS	3.98 m
G.V.W.	2,717 lb

## RALLY 2+2 AC

### DIMENSIONS

OVERALL LENGTH	134.37 in (341.3 cm)
OVERALL HEIGHT (NO SUN TOP)	57.48 in (146 cm)
OVERALL HEIGHT (WITH SUN TOP)	77.20 in (196.1 cm)
OVERALL WIDTH	53.54 in (136 cm)
WHEELBASE	77.28 in (196.3 cm)
FRONT WHEEL TREAD	41.26 in (104.8 cm)
REAR WHEEL TREAD	41.26 in (104.8 cm)
MINIMUM GROUND CLEARANCE	5.98 in (15.2 cm)
CURB WEIGHT	779 kg (1717 lb)

### GENERAL

TIRE SIZE	23x10.5-12 4-ply Monitor K389 (front) K500 (rear)
SEATING CAPACITY	Four persons
AVAILABLE MODEL COLORS	Glacier Metallic: Coral Red, Bluestone, Cyan, Onyx, Carbon, Matte: Titan
AVAILABLE SEAT & SUN TOP COLOR	Black
WARRANTY	Standard 2-year limited vehicle warranty

### ENGINE / DRIVE TRAIN

MOTOR	48-volt AC
OUTPUT RATING	6.7 hp (5.0 kW for 60 minutes)
MOTOR CONTROL UNIT	NEOS 350 amp AC controller by Toyota Industries Corporation
BATTERIES	Standard: Eight 6-volt Trojan T-105 Batteries

### CHASSIS

FRAME	HybriCore™ Chassis features a robotic welded automotive ladder-style steel frame protected with a multi-step full-immersion phosphate treatment, electro-deposition epoxy-based coating, and an electrostatic applied polyester/urethane powder topcoat
BODY	Custom-formulated thermoplastic olefin painted with a two-part top coat of high-luster automotive-grade polyurethane
STEERING	Self-compensating double reduction helical rack-and-pinion
FRONT SUSPENSION	Tru-Trak II™ fully independent automotive-style strut suspension
REAR SUSPENSION	Unit swing arm with DUAL RATE coil springs over hydraulic shock absorbers
BRAKES	Mechanical, 4-wheel drum
CARGO BED MAX LOAD	250 lb
ROLLING TRAILER MAX WEIGHT	1,200 lb
MAX TONGUE WEIGHT	400 lb
VEHICLE RATED CAPACITY	1,000 lb
CARGO BED DIMENSIONS	41.1" L x 45.9" W x 11.9" H

### PERFORMANCE

MAX FORWARD SPEED	15 mph (24.1 km/h)
MAX REVERSE SPEED	6.2 mph (10 km/h)
MINIMUM TURNING RADIUS	3.98 m
G.V.W.	2,345 lb

## SUPER HAULER QUTECH EFI

### DIMENSIONS

OVERALL LENGTH	142.9 (363 cm)
OVERALL WIDTH	53.5 in (136 cm)
OVERALL HEIGHT (NO SUN TOP)	48.8 in (124 cm)
WHEELBASE	98 in (249 cm)
FRONT WHEEL TREAD	34.6 in (88 cm)
REAR WHEEL TREAD	39.8 in (101 cm)
MINIMUM GROUND CLEARANCE	6.3 in (16 cm)
CURB WEIGHT (WITH BATTERY, OIL AND GASOLINE)	447 kg (985 lb)
FLOOR BOARD HEIGHT	13.4 in (34 cm)

### GENERAL

FUEL TANK CAPACITY	22 liters (5.8 gallons)
TIRE SIZE	205/65-10 4-PLY
SEATING CAPACITY	Two persons
AVAILABLE MODEL COLORS	Glacier
AVAILABLE SEAT COLORS	Standard: Black   Optional: Stone
AVAILABLE SUN TOP COLOR	Standard: Black
WARRANTY	Standard 2-year limited vehicle warranty

### ENGINE / DRIVE TRAIN / POWER SUPPLY

ENGINE TYPE	Yamaha-built, 357 cc, low-emission single cylinder 60° incline OHV
LUBRICATION SYSTEM	Splash-style positive oil lubrication
OIL CAPACITY	1 U.S. quart (1 liter, 1000 cc)
AIR CLEANER	Two-stage, urethane-foam pre-cleaner, and high-capacity pleated paper cartridge
COOLING SYSTEM	Forced air
FUEL SYSTEM	Electronic Fuel Injection
STARTING SYSTEM	Starter generator with pedal start system

### CHASSIS

FRAME	HybriCore™ Chassis features a robotic welded automotive ladder-style steel frame protected with a multi-step full-immersion phosphate treatment, electro-deposition epoxy-based coating, and an electrostatic applied polyester/urethane powder topcoat
BODY	Mold-in Polypropylene for Glacier color
STEERING	Self-compensating double reduction helical rack-and-pinion
FRONT SUSPENSION	Tru-Trak II™ fully independent automotive-style strut suspension
REAR SUSPENSION	Fully independent automotive-style strut suspension
BRAKES	Self-adjusting mechanical, rear wheel drum brakes
BUMPERS	Front and rear 5 mph energy-absorbing bumpers

### CARGO BED SIZE

LENGTH	70 in (177.9 cm)
WIDTH	47 in (119.4 cm)
HEIGHT	7.8 in (20 cm)
CARGO BED CAPACITY	800 lb

### PERFORMANCE

MAX SPEED ADJUSTABLE	19 mph (31 km/h)
MINIMUM TURNING RADIUS	14.4 ft (4.4 m)

## SUPER HAULER POWERTECH AC

### DIMENSIONS

OVERALL LENGTH	142.9 (363 cm)
OVERALL WIDTH	53.5 in (136 cm)
OVERALL HEIGHT (NO SUN TOP)	48.8 in (124 cm)
WHEELBASE	98 in (249 cm)
FRONT WHEEL TREAD	34.6 in (88 cm)
REAR WHEEL TREAD	38.2 in (97 cm)
MINIMUM GROUND CLEARANCE	5.5 in (14 cm)
CURB WEIGHT (WITH BATTERY)	594 kg (1310 lb)
FLOOR BOARD HEIGHT	13 in (33 cm)

### GENERAL

TIRE SIZE	205/65-10 4-PLY
SEATING CAPACITY	Two persons
AVAILABLE MODEL COLORS	Glacier
AVAILABLE SEAT COLORS	Standard: Black   Optional: Stone
AVAILABLE SUN TOP COLOR	Standard: Black
WARRANTY	Standard 2-year limited vehicle warranty

### ENGINE / DRIVE TRAIN

MOTOR	48-volt AC
OUTPUT RATING	6.7 hp (5.0 kW)
MOTOR CONTROL UNIT	NEOS 350 amp AC controller by Toyota Industries Corporation
BATTERIES	Standard: Six 8-volt Trojan T-875 Batteries Optional: Eight 6-volt Trojan T-105 Batteries

### CHASSIS

FRAME	HybriCore™ Chassis features a robotic welded automotive ladder-style steel frame protected with a multi-step full-immersion phosphate treatment, electro-deposition epoxy-based coating, and an electrostatic applied polyester/urethane powder topcoat
BODY	Mold-in Polypropylene for Glacier color
STEERING	Self-compensating double reduction helical rack-and-pinion
FRONT SUSPENSION	Tru-Trak II™ fully independent automotive-style strut suspension
REAR SUSPENSION	Unit swing arm with coil springs over hydraulic shock absorbers
BRAKES	Self-adjusting mechanical, rear wheel drum brakes
BUMPERS	Front and rear 5 mph energy-absorbing bumpers

### CARGO BED SIZE

LENGTH	46.4 in (117.9 cm)
WIDTH	47 in (119.4 cm)
HEIGHT	7.8 in (20 cm)
CARGO BED CAPACITY	800 lb

### PERFORMANCE

MAX SPEED ADJUSTABLE	19 mph (30.5 km/h)
MINIMUM TURNING RADIUS	14.4 ft (4.4 m)



## CONCIERGE 4 QUTECH EFI

DIMENSIONS	
OVERALL LENGTH	127.2 (323 cm)
OVERALL WIDTH	47.2 in (120 cm)
OVERALL HEIGHT (NO SUN TOP)	48.8 in (124 cm)
WHEELBASE	98 in (249 cm)
FRONT WHEEL TREAD	34.6 in (88 cm)
REAR WHEEL TREAD	38.2 in (97 cm)
MINIMUM GROUND CLEARANCE	5.9 in (15 cm)
CURB WEIGHT (WITH SUN TOP, BATTERY, OIL AND GASOLINE)	458 kg (1010 lb)
FLOOR BOARD HEIGHT	13.4 in (34 cm)

GENERAL	
FUEL TANK CAPACITY	22 liters (5.8 gallons)
TIRE SIZE	205/65-10 4-PLY
SEATING CAPACITY	Four persons
AVAILABLE MODEL COLORS	In-Mold: Glacier, Metallic: Peridot, Onyx, Coral Red, Carbon, Matte: Titan, Arctic Drift
AVAILABLE SEAT COLORS	Standard: Stone   Optional: Black
AVAILABLE SUN TOP COLOR	Stone, Black, White
WARRANTY	Standard 2-year limited vehicle warranty

### ENGINE / DRIVE TRAIN / POWER SUPPLY

ENGINE TYPE	Yamaha-built, 357 cc, low-emission single cylinder 60° incline OHV
LUBRICATION SYSTEM	Splash-style positive oil lubrication
OIL CAPACITY	1 U.S. quart (1 liter, 1000 cc)
AIR CLEANER	Two-stage, urethane-foam pre-cleaner, and high-capacity pleated paper cartridge
COOLING SYSTEM	Forced air
FUEL SYSTEM	Electronic Fuel Injection
STARTING SYSTEM	Starter generator with pedal start system

### CHASSIS

FRAME	HybriCore™ Chassis features a robotic welded automotive ladder-style steel frame protected with a multi-step full-immersion phosphate treatment, electro-deposition epoxy-based coating, and an electrostatic applied polyester/urethane powder topcoat
BODY	Mold-in Polypropylene for Glacier color. Custom-formulated thermoplastic olefin painted with a two-part top coat of high-luster automotive-grade polyurethane
STEERING	Self-compensating double reduction helical rack-and-pinion
FRONT SUSPENSION	Tru-Trak II™ fully independent automotive-style strut suspension
REAR SUSPENSION	Fully independent automotive-style strut suspension
BRAKES	Self-adjusting mechanical, rear wheel drum brakes
BUMPERS	Front and rear 5 mph energy-absorbing bumpers

### PERFORMANCE

MAX FORWARD SPEED	19 mph (31 km/h)
MINIMUM TURNING RADIUS	14.4 ft (4.4 m)

## CONCIERGE 4 POWERTECH AC

DIMENSIONS	
OVERALL LENGTH	127.2 (323 cm)
OVERALL WIDTH	47.2 in (120 cm)
OVERALL HEIGHT (NO SUN TOP)	48.8 in (124 cm)
WHEELBASE	98 in (249 cm)
FRONT WHEEL TREAD	34.6 in (88 cm)
REAR WHEEL TREAD	38.2 in (97 cm)
MINIMUM GROUND CLEARANCE	5.5 in (14 cm)
DRY WEIGHT (WITH SUN TOP, FLOODED BATTERY)	564 kg (1,243 lb)
FLOOR BOARD HEIGHT	13 in (33 cm)

### GENERAL

TIRE SIZE	205/65-10 4-PLY
SEATING CAPACITY	Four persons
AVAILABLE MODEL COLORS	In-Mold: Glacier, Metallic: Peridot, Onyx, Coral Red, Carbon, Matte: Titan, Arctic Drift
AVAILABLE SEAT COLORS	Standard: Stone   Optional: Black
AVAILABLE SUN TOP COLOR	Stone, Black, White
WARRANTY	Standard 2-year limited vehicle warranty

### ENGINE / DRIVE TRAIN

MOTOR	48-volt AC
OUTPUT RATING	6.7 hp (5.0 kW)
MOTOR CONTROL UNIT	NEOS 350 amp AC controller by Toyota Industries Corporation
BATTERIES	Standard: Six 8-volt Trojan T-875 Batteries Optional: Eight 6-volt Trojan T-105 Batteries

### CHASSIS

FRAME	HybriCore™ Chassis features a robotic welded automotive ladder-style steel frame protected with a multi-step full-immersion phosphate treatment, electro-deposition epoxy-based coating, and an electrostatic applied polyester/urethane powder topcoat
BODY	Mold-in Polypropylene for Glacier color. Custom-formulated thermoplastic olefin painted with a two-part top coat of high-luster automotive-grade polyurethane
STEERING	Self-compensating double reduction helical rack-and-pinion
FRONT SUSPENSION	Tru-Trak II™ fully independent automotive-style strut suspension
REAR SUSPENSION	Unit swing arm with coil springs over hydraulic shock absorbers
BRAKES	Self-adjusting mechanical, rear wheel drum brakes
BUMPERS	Front and rear 5 mph energy-absorbing bumpers

### PERFORMANCE

MAX FORWARD SPEED	19 mph (31 km/h)
MINIMUM TURNING RADIUS	14.4 ft (4.4 m)

## CONCIERGE 6 QUTECH EFI

DIMENSIONS	
OVERALL LENGTH	161 in (409 cm)
OVERALL WIDTH	47.3 in (120 cm)
OVERALL HEIGHT (NO SUN TOP)	48.8 in (124 cm)
WHEELBASE	131.9 in (335 cm)
FRONT WHEEL TREAD	34.6 in (88 cm)
REAR WHEEL TREAD	38.2 in (97 cm)
MINIMUM GROUND CLEARANCE	5.9 in (15 cm)
CURB WEIGHT (WITH SUN TOP, BATTERY, OIL AND GASOLINE)	540 kg (1190 lb)
FLOOR BOARD HEIGHT	13.4 in (34 cm)

### GENERAL

FUEL TANK CAPACITY	22 liters (5.8 gallons)
TIRE SIZE	205/65-10 4-PLY
SEATING CAPACITY	Six persons
AVAILABLE MODEL COLORS	In-Mold: Glacier, Metallic: Peridot, Onyx, Coral Red, Carbon, Matte: Titan, Arctic Drift
AVAILABLE SEAT COLORS	Standard: Stone   Optional: Black
AVAILABLE SUN TOP COLOR	Stone, Black, White
WARRANTY	Standard 2-year limited vehicle warranty

### ENGINE / DRIVE TRAIN / POWER SUPPLY

ENGINE TYPE	Yamaha-built, 357 cc, low-emission single cylinder 60° incline OHV
LUBRICATION SYSTEM	Splash-style positive oil lubrication
OIL CAPACITY	1 U.S. quart (1 liter, 1000 cc)
AIR CLEANER	Two-stage, urethane-foam pre-cleaner, and high-capacity pleated paper cartridge
COOLING SYSTEM	Forced air
FUEL SYSTEM	Electronic Fuel Injection
STARTING SYSTEM	Starter generator with pedal start system

### CHASSIS

FRAME	HybriCore™ Chassis features a robotic welded automotive ladder-style steel frame protected with a multi-step full-immersion phosphate treatment, electro-deposition epoxy-based coating, and an electrostatic applied polyester/urethane powder topcoat
BODY	Mold-in Polypropylene for Glacier color. Custom-formulated thermoplastic olefin painted with a two-part top coat of high-luster automotive-grade polyurethane
STEERING	Self-compensating double reduction helical rack-and-pinion
FRONT SUSPENSION	Tru-Trak II™ fully independent automotive-style strut suspension
REAR SUSPENSION	Fully independent automotive-style strut suspension
BRAKES	Self-adjusting mechanical, rear wheel drum brakes
BUMPERS	Front and rear 5 mph energy-absorbing bumpers

### PERFORMANCE

MAX FORWARD SPEED	19 mph (31 km/h)
MINIMUM TURNING RADIUS	18.7 ft (5.7 m)

## CONCIERGE 6 POWERTECH AC

DIMENSIONS	
OVERALL LENGTH	161 in (409 cm)
OVERALL WIDTH	47.2 in (120 cm)
OVERALL HEIGHT (NO SUN TOP)	48.8 in (124 cm)
WHEELBASE	131.9 in (335 cm)
FRONT WHEEL TREAD	34.6 in (88 cm)
REAR WHEEL TREAD	38.2 in (97 cm)
MINIMUM GROUND CLEARANCE	5.5 in (14 cm)
CURB WEIGHT (WITH SUN TOP, FLOODED BATTERY)	628 kg (1384 lb)
FLOOR BOARD HEIGHT	13 in (33 cm)

### GENERAL

TIRE SIZE	205/65-10 4-PLY
SEATING CAPACITY	Six persons
AVAILABLE MODEL COLORS	In-Mold: Glacier, Metallic: Peridot, Onyx, Coral Red, Carbon, Matte: Titan, Arctic Drift
AVAILABLE SEAT COLORS	Standard: Stone   Optional: Black
AVAILABLE SUN TOP COLOR	Stone, Black, White
WARRANTY	Standard 2-year limited vehicle warranty

### ENGINE / DRIVE TRAIN

MOTOR	48-volt AC
OUTPUT RATING	6.7 hp (5.0 kW)
MOTOR CONTROL UNIT	NEOS 350 amp AC controller by Toyota Industries Corporation
BATTERIES	Standard: Six 8-volt Trojan T-875 Batteries Optional: Eight 6-volt Trojan T-105 Batteries

### CHASSIS

FRAME	HybriCore™ Chassis features a robotic welded automotive ladder-style steel frame protected with a multi-step full-immersion phosphate treatment, electro-deposition epoxy-based coating, and an electrostatic applied polyester/urethane powder topcoat
BODY	Mold-in Polypropylene for Glacier color. Custom-formulated thermoplastic olefin painted with a two-part top coat of high-luster automotive-grade polyurethane
STEERING	Self-compensating double reduction helical rack-and-pinion
FRONT SUSPENSION	Tru-Trak II™ fully independent automotive-style strut suspension
REAR SUSPENSION	Unit swing arm with coil springs over hydraulic shock absorbers
BRAKES	Self-adjusting mechanical, rear wheel drum brakes
BUMPERS	Front and rear 5 mph energy-absorbing bumpers

### PERFORMANCE

MAX FORWARD SPEED	19 mph (31 km/h)
MINIMUM TURNING RADIUS	18.7 ft (5.7 m)



**SEE MORE ONLINE!**

Scan now to view warranty information.





1270 Chastain Road NW  
Kennesaw, Georgia 30144  
1.866.747.4027 | YamahaGolfCar.com



Scan for a digital  
copy of this brochure

This document contains many of the valuable trademarks and service marks owned and used by Yamaha throughout the world. The document may also contain references to other company, brand, and product names that may be the trademarks/service marks of their respective owners. Unless noted otherwise, these company, brand, and product names are used herein for identification purposes only, and reference to any names, marks, products, or services of third parties do not constitute or imply endorsement, sponsorship, or recommendation of the third party or the product or services. Products and specifications are subject to change without notice.